

NSAC Long Range Plan Town Hall Meeting on Nuclear Structure, Reactions and Astrophysics

Nov 14 – 16, 2022
Argonne National Laboratory
US/Central timezone

Enter your search term

All non-U.S. citizens should register as soon as possible to insure that your paperwork is processed in time for you to be allowed to enter the site.

Overview

About

Participant List

Code of Conduct

Registration

Venue

Site Access

Transportation

Accommodation

Program

Working Group Sessions

USNDP Satellite Workshop

Local Organizing Committee

Previous Meetings

White Papers/Reports

Sponsors

Working Group Sessions

The Working Group schedule, room location, remote connection information, and program links are below. Session conveners and points of contact are given below the schedule.

A one-page overview of the program is [here](#).

Session 1: 8:05 - 10:05 (2 hours)

Working Group Session	In-person and Remote Connection Information	Program
Nuclear Structure & Reaction Theory, part I	APS Conference Center (Bldg. 402), E0100 Zoom link: https://tennessee.zoom.us/j/94306462864 Meeting ID: 943 0646 2864 Passcode: 284129	Program
Nuclear Astrophysics Modeling, part I	APS Conference Center (Bldg. 401), A1100 Zoom link: https://tennessee.zoom.us/j/98208065901 Meeting ID: 98208065901 Passcode: 002209	Program
Facilities, Detectors & Upgrades, part I	APS Conference Center (Bldg. 402), Auditorium Zoom link: https://notredame.zoom.us/j/92314203864?pwd=S2xlZUhGV2lJb3pHbFpxZnJFeGFsUT09 Meeting ID: 923 1420 3864	Program

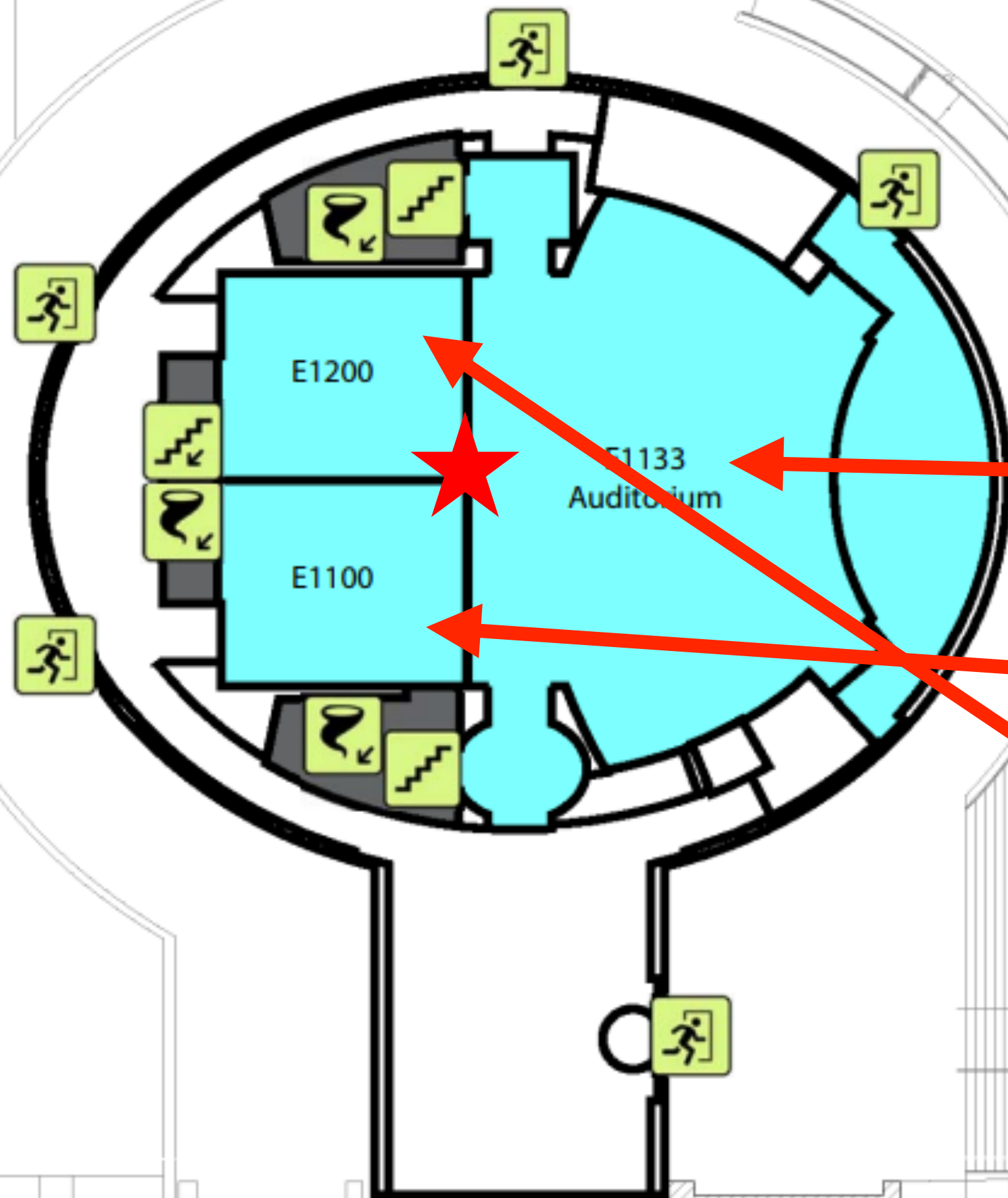
Coffee/snacks (~7:30-8:05)





★ You Are Here

■ Conference / Meeting Rooms



Session 1: 8:05 - 10:05 (2 hours)

Working Group Session	In-person and Remote Connection Information	Program
Nuclear Structure & Reaction Theory, part I	APS Conference Center (Bldg. 402), E0100 Zoom link: https://tennessee.zoom.us/j/94306462864 Meeting ID: 943 0646 2864 Passcode: 284129	Program
Nuclear Astrophysics Modeling, part I	APS Conference Center (Bldg. 401), A1100 Zoom link: https://tennessee.zoom.us/j/98208065901 Meeting ID: 98208065901 Passcode: 002209	Program
Facilities, Detectors & Upgrades, part I	APS Conference Center (Bldg. 402), Auditorium Zoom link: https://notredame.zoom.us/j/92314203864?pwd=S2xIZUhGV2lJb3pHbFpxZnJFeGFsUT09 Meeting ID: 923 1420 3864 Passcode: 134181	Program
Workforce & Education, part I	APS Conference Center (Bldg. 402), E1100 Zoom link: https://wisconsin-edu.zoom.us/j/94992765486 Meeting ID: 949 9276 5486 Passcode: 680177	Program
Isotopes	Physics Division (Bldg. 203), Auditorium (map) Zoom link: https://tamu.zoom.us/j/91094436966?pwd=QWZsOWJkNDFqSG1VTVR3Rnk0UHFqdz09 Meeting ID: 910 9443 6966 Passcode: 430743	Program
Nuclear Data, part I	APS Conference Center (Bldg. 402), E1200 Zoom link: https://duke.zoom.us/j/97327980231?pwd=SjNDNzIEVFIINStvckFKOUoxVm5tZz09 Meeting ID: 973 2798 0231 Passcode: 898603	Program

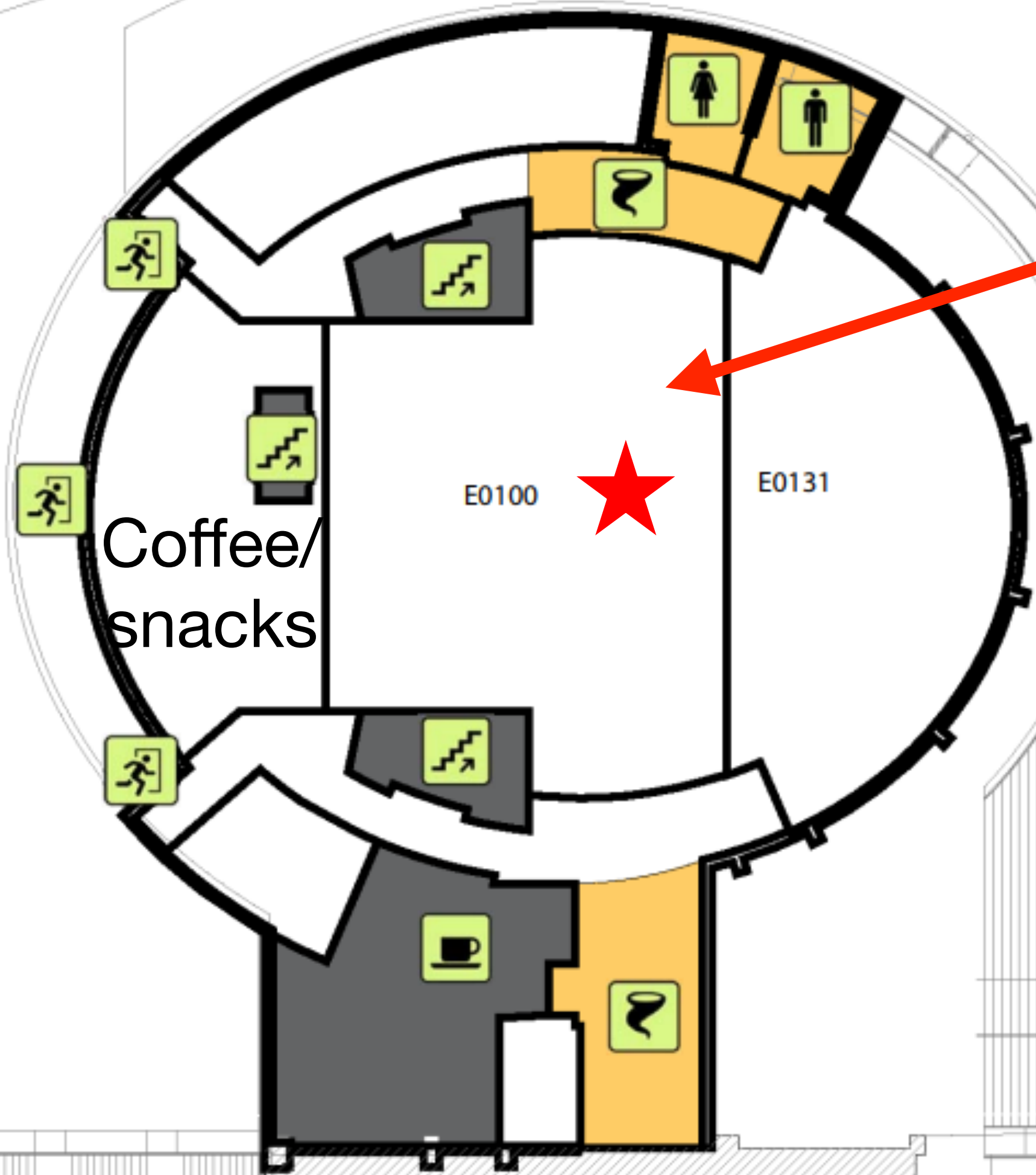


Building 402 First



★ You Are Here

■ Tornado Shelter

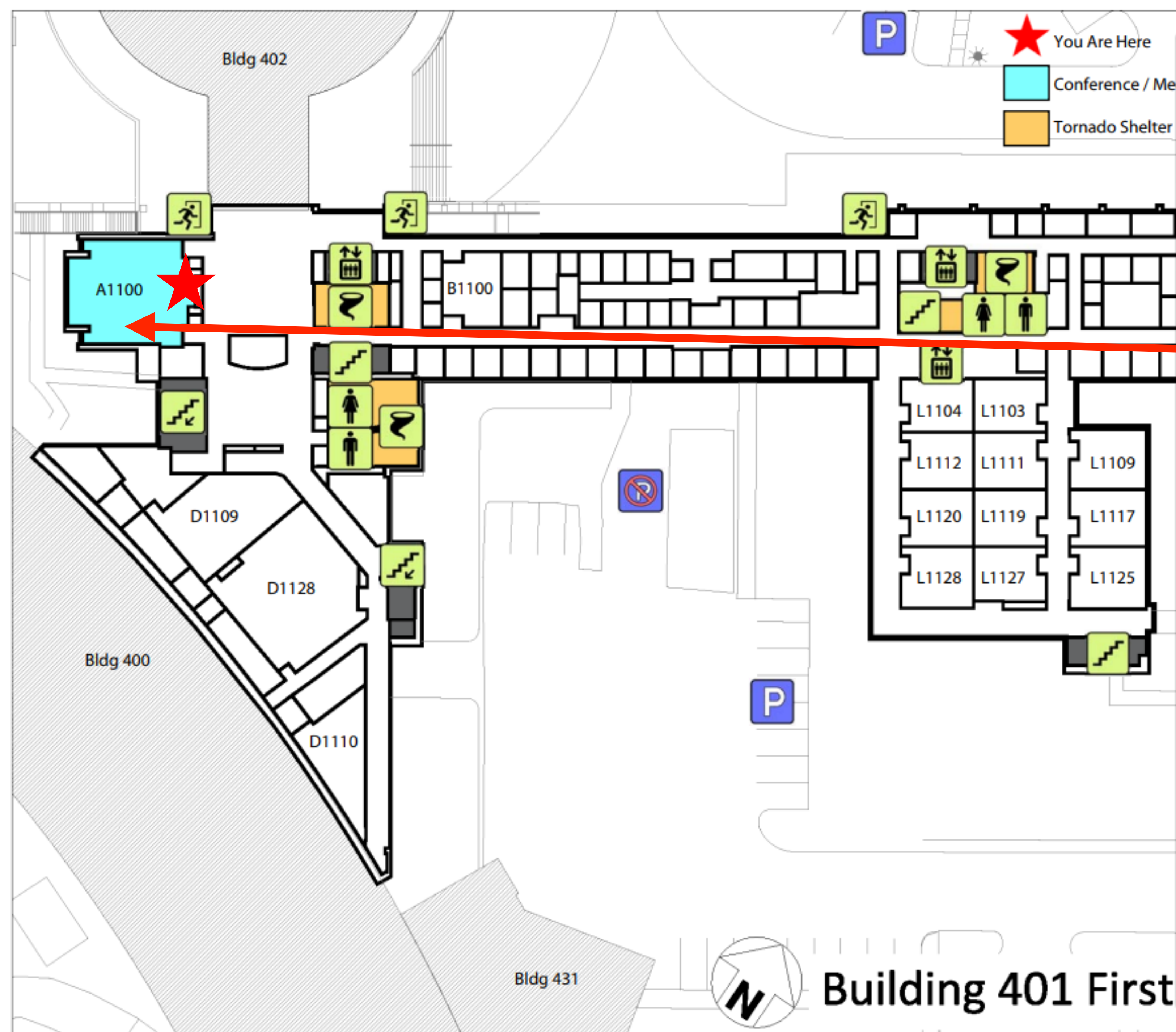


Session 1: 8:05 - 10:05 (2 hours)

Working Group Session	In-person and Remote Connection Information	Program
Nuclear Structure & Reaction Theory, part I	APS Conference Center (Bldg. 402), E0100 Zoom link: https://tennessee.zoom.us/j/94306462864 Meeting ID: 943 0646 2864 Passcode: 284129	Program
Nuclear Astrophysics Modeling, part I	APS Conference Center (Bldg. 401), A1100 Zoom link: https://tennessee.zoom.us/j/98208065901 Meeting ID: 98208065901 Passcode: 002209	Program
Facilities, Detectors & Upgrades, part I	APS Conference Center (Bldg. 402), Auditorium Zoom link: https://notredame.zoom.us/j/92314203864?pwd=S2xlZUhGV2lJb3pHbFpxZnJFeGFsUT09 Meeting ID: 923 1420 3864 Passcode: 134181	Program
Workforce & Education, part I	APS Conference Center (Bldg. 402), E1100 Zoom link: https://wisconsin-edu.zoom.us/j/94992765486 Meeting ID: 949 9276 5486 Passcode: 680177	Program
Isotopes	Physics Division (Bldg. 203), Auditorium (map) Zoom link: https://tamu.zoom.us/j/91094436966?pwd=QWZsOWJkNDFqSG1VTVR3Rnk0UHFqdz09 Meeting ID: 910 9443 6966 Passcode: 430743	Program
Nuclear Data, part I	APS Conference Center (Bldg. 402), E1200 Zoom link: https://duke.zoom.us/j/97327980231?pwd=SjNDNzIEVFIINStvckFKOUoxVm5tZz09 Meeting ID: 973 2798 0231 Passcode: 898603	Program



Building 402 Service F



Session 1: 8:05 - 10:05 (2 hours)

Working Group Session	In-person and Remote Connection Information	Program
Nuclear Structure & Reaction Theory, part I	APS Conference Center (Bldg. 402), E0100 Zoom link: https://tennessee.zoom.us/j/94306462864 Meeting ID: 943 0646 2864 Passcode: 284129	Program
Nuclear Astrophysics Modeling, part I	APS Conference Center (Bldg. 401), A1100 Zoom link: https://tennessee.zoom.us/j/98208065901 Meeting ID: 98208065901 Passcode: 002209	Program
Facilities, Detectors & Upgrades, part I	APS Conference Center (Bldg. 402), Auditorium Zoom link: https://notredame.zoom.us/j/92314203864?pwd=S2xIZUhGV2lJb3pHbFpxZnJFeGFsUT09 Meeting ID: 923 1420 3864 Passcode: 134181	Program
Workforce & Education, part I	APS Conference Center (Bldg. 402), E1100 Zoom link: https://wisconsin-edu.zoom.us/j/94992765486 Meeting ID: 949 9276 5486 Passcode: 680177	Program
Isotopes	Physics Division (Bldg. 203), Auditorium (map) Zoom link: https://tamu.zoom.us/j/91094436966?pwd=QWZsOWJkNDFqSG1VTVR3Rnk0UHFqdz09 Meeting ID: 910 9443 6966 Passcode: 430743	Program
Nuclear Data, part I	APS Conference Center (Bldg. 402), E1200 Zoom link: https://duke.zoom.us/j/97327980231?pwd=SjNDNzIEVFIINStvckFKOUoxVm5tZz09 Meeting ID: 973 2798 0231 Passcode: 898603	Program

Building 401 First Floor

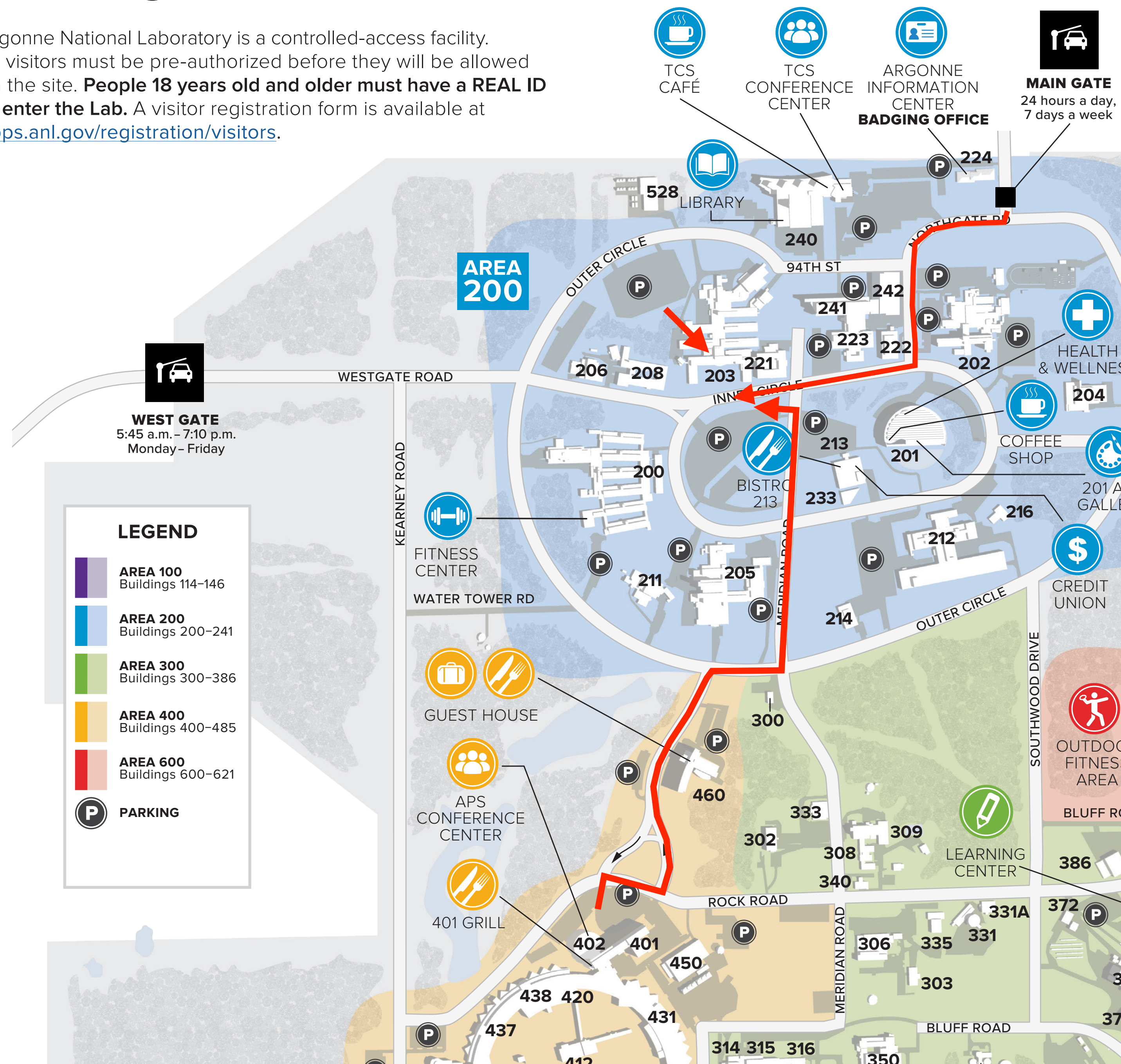
Monday, November 14th	
7:30-8:05	Arrival/Registration/Coffee available APS Conference Center, Building 402
8:05-8:15	Welcome and Logistics <i>Rebecca Surman (Notre Dame)</i>
8:15-8:30	Charge and LRP process <i>Gail Dodge (ODU)</i>
8:30-9:00	Predictive theory of nuclei and their interactions <i>Thomas Papenbrock (UTK)</i>
9:00-09:30	Experimental studies of nuclei - Structure and reactions <i>Heather Crawford (LBNL)</i>
9:30-10:00	Theory for nuclear astrophysics <i>Gail McLaughlin (NSCU)</i>
10:00-10:30	Nuclear astrophysics experiments <i>Kelly Chipps (ORNL)</i>
10:30-10:40	Discussion <i>All</i>
10:40-11:00	Break (coffee/snacks served) APS Conference Center, Lower Gallery
11:00-11:25	FRIB status and path forward <i>Thomas Glasmacher (FRIB)</i>
11:25-11:50	ATLAS/CARIBU status and plans <i>Guy Savard (ANL)</i>
11:50-12:15	ARUNA prospects <i>Ingo Wiedenhöver (FSU)</i>
12:15-12:25	Discussion <i>All</i>
12:25-13:30	Working Lunch (box lunch provided) APS Conference Center, Lower Gallery
13:30-13:55	Fostering a culture of belonging in the LE NP community <i>Warren Rogers (IWU)</i>
13:55-14:20	Training the next generation of nuclear scientists <i>Shelly Leshner (UW-La Crosse)</i>
14:20-14:45	Quantum computing and simulations <i>Dean Lee (FRIB)</i>
14:45-	

Tuesday, November 15th	
7:30-8:05	Arrival/Registration/Coffee available APS Conference Center, Building 402
8:05-10:05	Nuclear Structure & Reaction Theory I Building 402, Room E0100
	Nuclear Astrophysics Modeling, part I Building 401, Room A1100
	Facilities, Detectors & Upgrades, part I Building 402, Auditorium
	Workforce & Education, part I Building 402, Room E1100
	Isotopes Building 203, Auditorium
	Nuclear Data, part I Building 402, Room E1200
10:05-10:30	Break (coffee/snacks served) APS Conference Center, Lower Gallery
10:30-12:30	Nuclear Structure & Reaction Theory II Building 402, Room E0100
	Nuclear Astrophysics Modeling, part II Building 401, Room A1100
	Facilities, Detectors & Upgrades, part II Building 402, Auditorium
	Diversity, Equity, Inclusion, Belonging I Building 402, Room E1100
	Fundamental Symmetries Building 203, Auditorium
	Nuclear Data, part II Building 402, Room E1200
12:30-13:30	Working Lunch (box lunch provided) APS Conference Center, Lower Gallery
13:30-	Computing, part 1 - HPC Building 401, Room A1100
	Connecting Nuclei to the Cosmos, part I Building 402, Room E0100

Wednesday, November 16th	
7:30-8:05	Arrival/Registration/Coffee available APS Conference Center, Building 402
8:05-8:10	Logistics
8:10-9:10	5-minute summaries of each of the 12 WGs
9:10-9:35	Discussion of the summaries, explore possible cross connections, gaps
9:35-10:00	Break (coffee/snacks served) APS Conference Center, Lower Gallery
10:00-noon	Resolutions

Getting Around Campus

Argonne National Laboratory is a controlled-access facility. All visitors must be pre-authorized before they will be allowed on the site. **People 18 years old and older must have a REAL ID to enter the Lab.** A visitor registration form is available at apps.anl.gov/registration/visitors.



Session 1: 8:05 - 10:05 (2 hours)

Working Group Session	In-person and Remote Connection Information	Program
Nuclear Structure & Reaction Theory, part I	APS Conference Center (Bldg. 402), E0100 Zoom link: https://tennessee.zoom.us/j/94306462864 Meeting ID: 943 0646 2864 Passcode: 284129	Program
Nuclear Astrophysics Modeling, part I	APS Conference Center (Bldg. 401), A1100 Zoom link: https://tennessee.zoom.us/j/98208065901 Meeting ID: 98208065901 Passcode: 002209	Program
Facilities, Detectors & Upgrades, part I	APS Conference Center (Bldg. 402), Auditorium Zoom link: https://notredame.zoom.us/j/92314203864?pwd=S2xIZUhGV2lJb3pHbFpxZnJFeGFsUT09 Meeting ID: 923 1420 3864 Passcode: 134181	Program
Workforce & Education, part I	APS Conference Center (Bldg. 402), E1100 Zoom link: https://wisconsin.edu.zoom.us/j/94992765486 Meeting ID: 949 9276 5486 Passcode: 680177	Program
Isotopes	Physics Division (Bldg. 203), Auditorium (map) Zoom link: https://tamu.zoom.us/j/91094436966?pwd=QWZsOWJkNDFqSG1VTVR3Rnk0UHFqdz09 Meeting ID: 910 9443 6966 Passcode: 430743	Program
Nuclear Data, part I	APS Conference Center (Bldg. 402), E1200 Zoom link: https://duke.zoom.us/j/97327980231?pwd=SjNDNzIEVFIINStvckFKOUoxVm5tZz09 Meeting ID: 973 2798 0231 Passcode: 898603	Program

WG Session Organizers/chairs/designated leads:

- Please plan to be in your room 10-15 mins ahead of time to setup and work with AV
- Rooms A1100, Auditorium, and Physics Division Auditorium have "house" computers. Anyone can join via Zoom and screen share (most efficient)
- E0100, E1100, E1200 will run from the organizer's laptops (support available). The AV equipment connects through USB-C. Once setup, anyone can join Zoom and share.